

# Pool Peer Group Overview



## STRENGTHS

- 23 Clients
- 51 Portfolios
  - \$5.58B In Assets
  - \$4.7B Core Fixed Income (84.22%)
  - \$0.88B Risk Assets (15.78%)

## WEAKNESSES

- 18 Clients
- 31 Portfolios
  - \$4.29B In Assets
  - \$3.63B Core Fixed Income (84.62%)
  - \$0.66B Risk Assets (15.38%)

## OPPORTUNITIES

- 9 Client Portfolios
  - \$333M In Assets
  - \$288M Core Fixed Income (86.49%)
  - \$45.2M Risk Assets (13.51%)

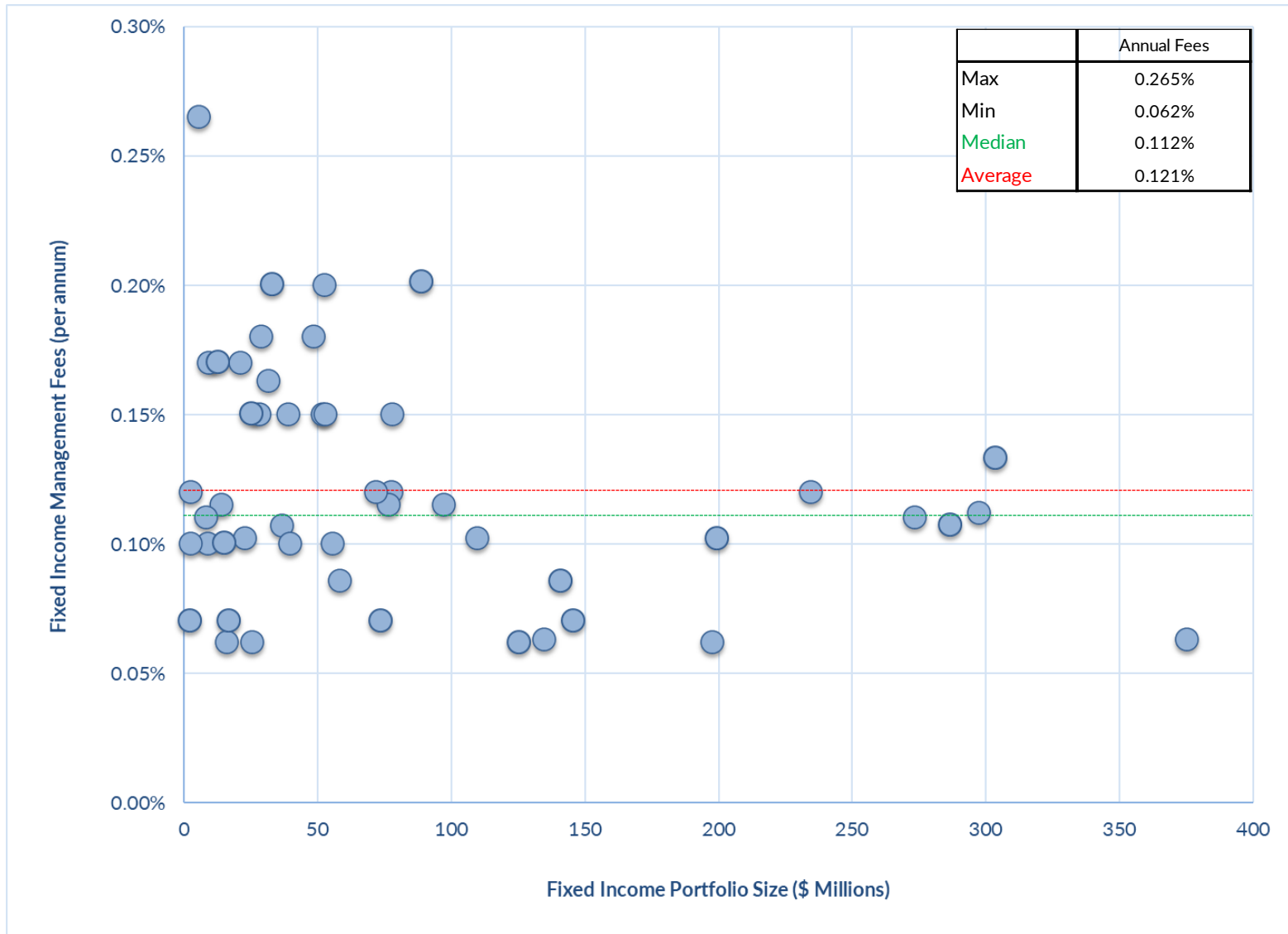
## THREATS

- 9 Client Portfolios
  - \$961M In Assets
  - \$776M Core Fixed Income (80.75%)
  - \$185M Risk Assets (19.25%)



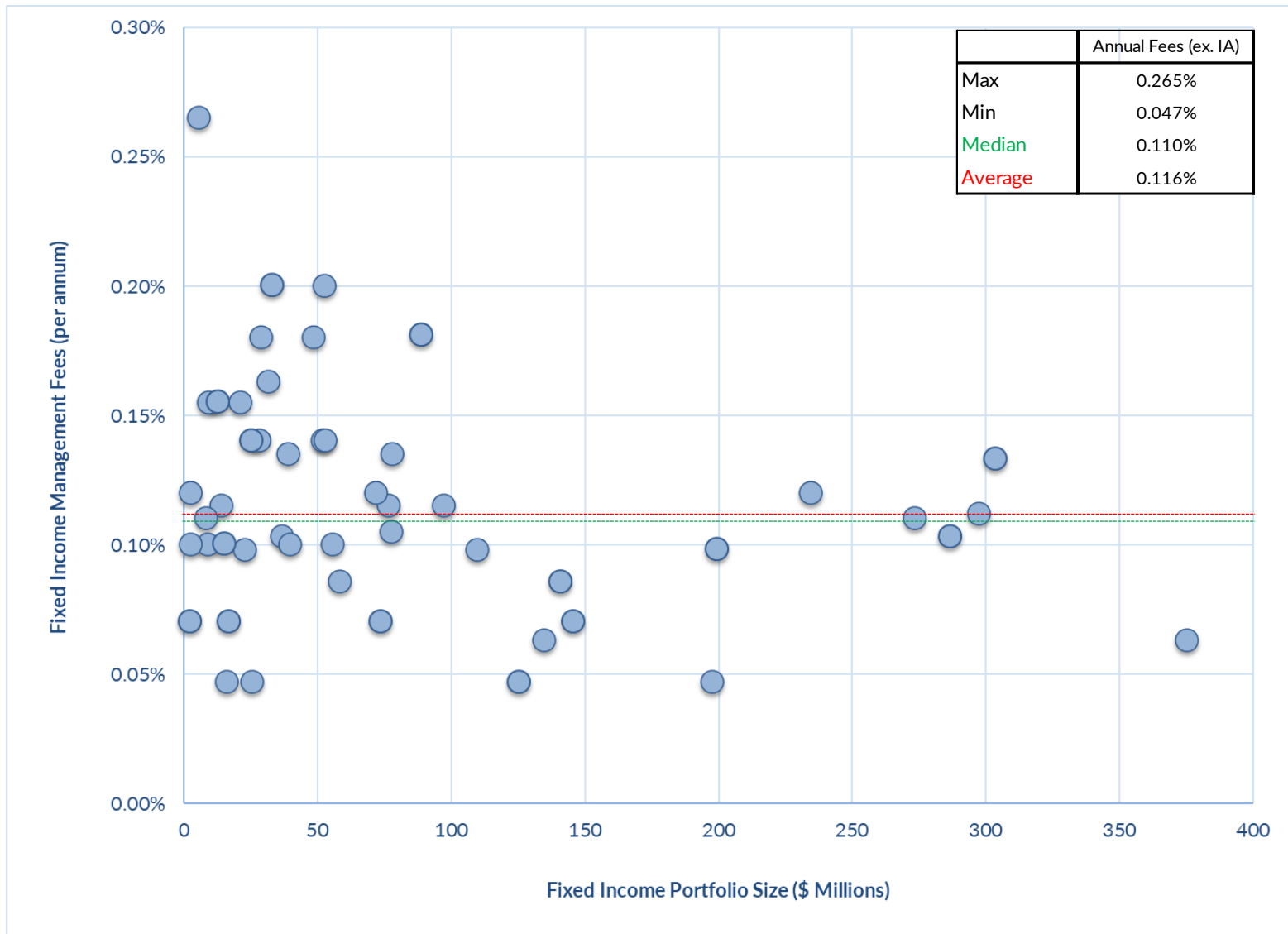


# Fixed Income Investment Management Fees





# Fixed Income Investment Management Fees (ex Investment Accounting)





**FIXED INCOME MANAGEMENT: STANDARD FEE COMPARISONS**





# Manager Select: SAA's Proprietary Fixed Income Manager Database

---

## Our Database Consists of:

- 85 Investment Management Firms
- Totaling 6,030 Insurance Fixed Income Accounts and \$5.781T in Fixed Income Assets (unaffiliated)





**OVERALL FEES: FIRMS OFFERING INVESTMENT ACCOUNTING**



# Standard Fixed Income Management Fees: Investment Accounting (basis points)





**OVERALL FEE ESTIMATES: BY PORTFOLIO SIZE**

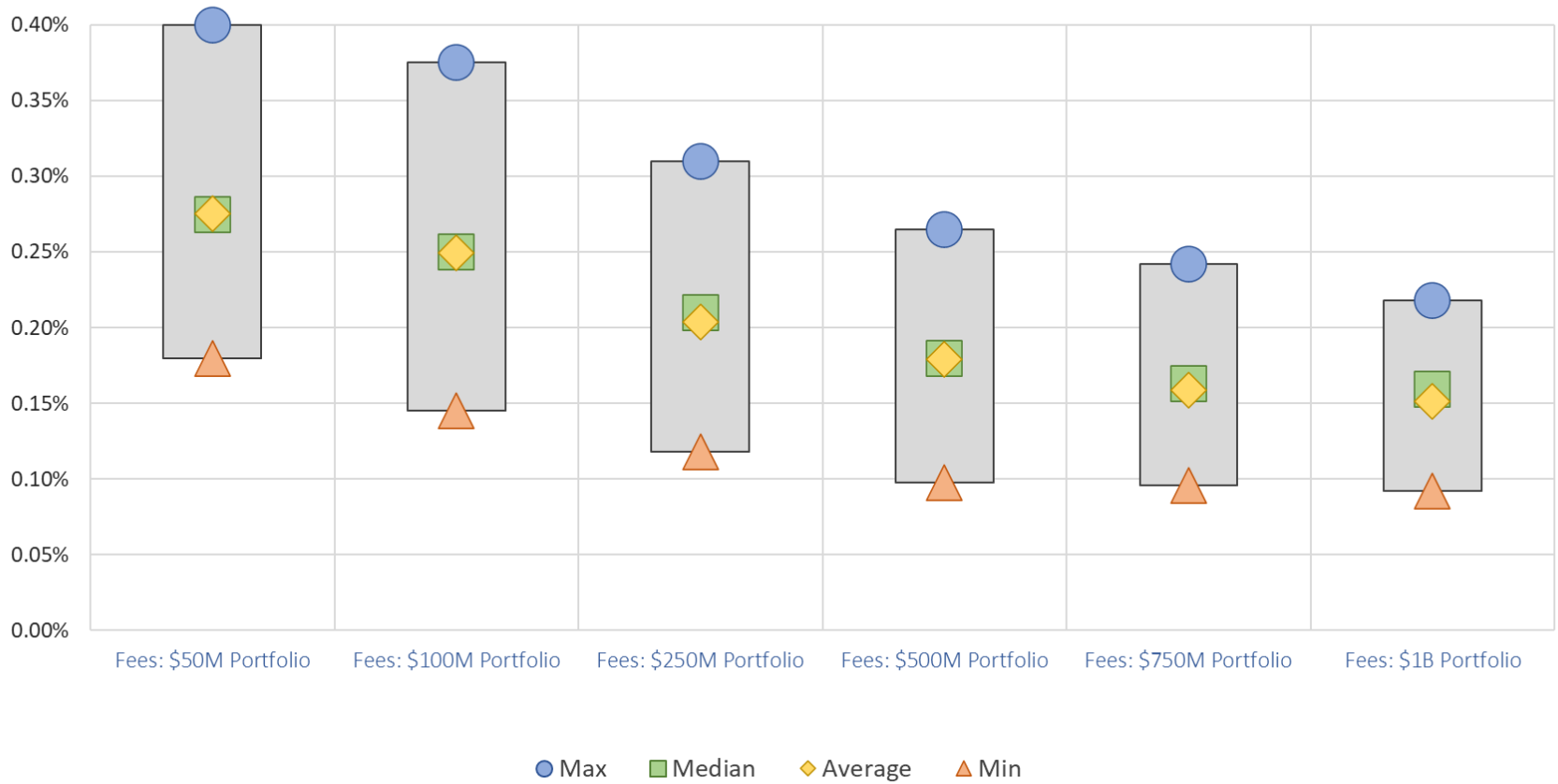






# Standard Fixed Income Management Fees: Overall *(basis points)*

Fixed Income Management Fees



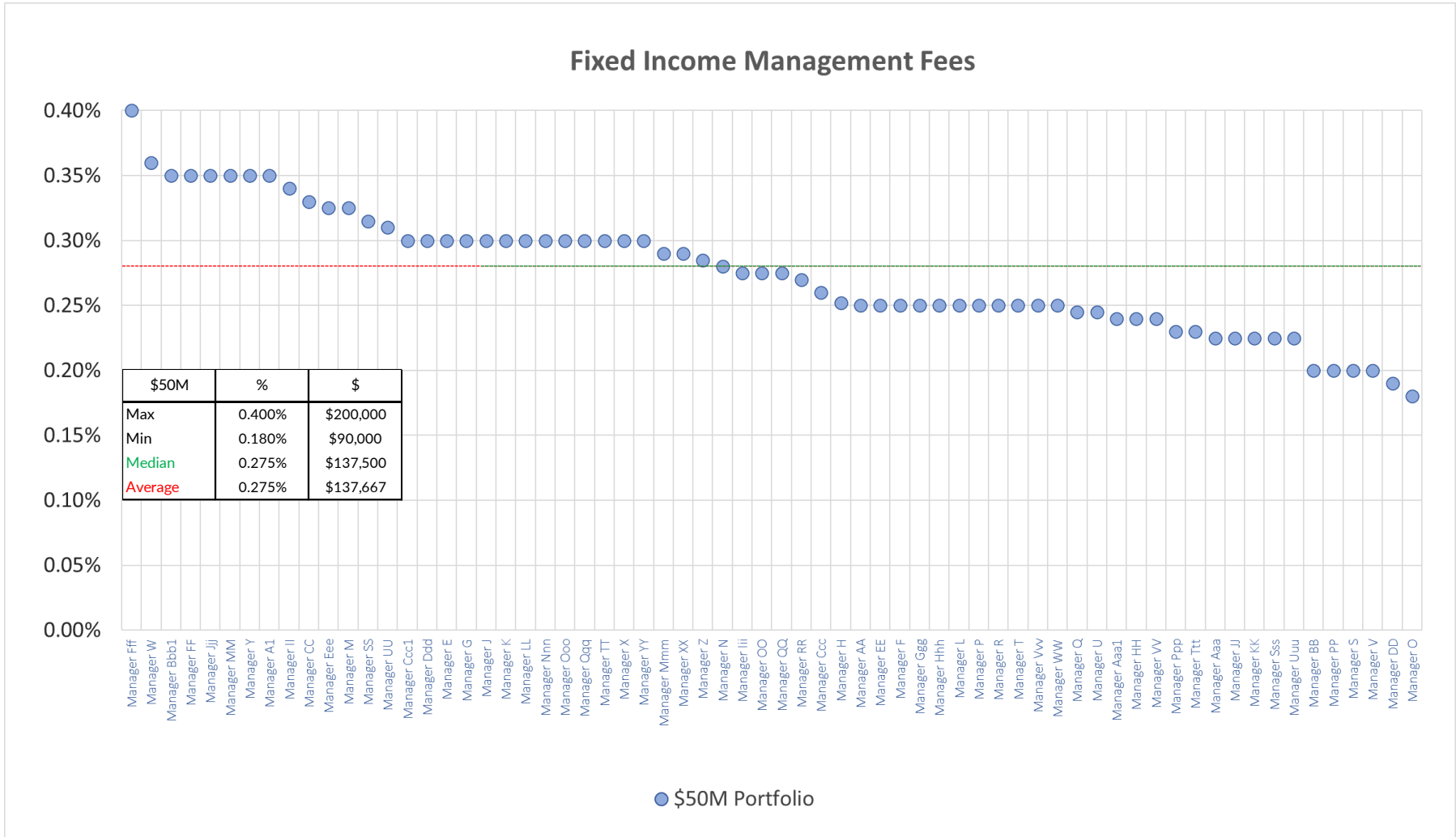


**STANDARD FEES: BY FIRM / PORTFOLIO SIZE**



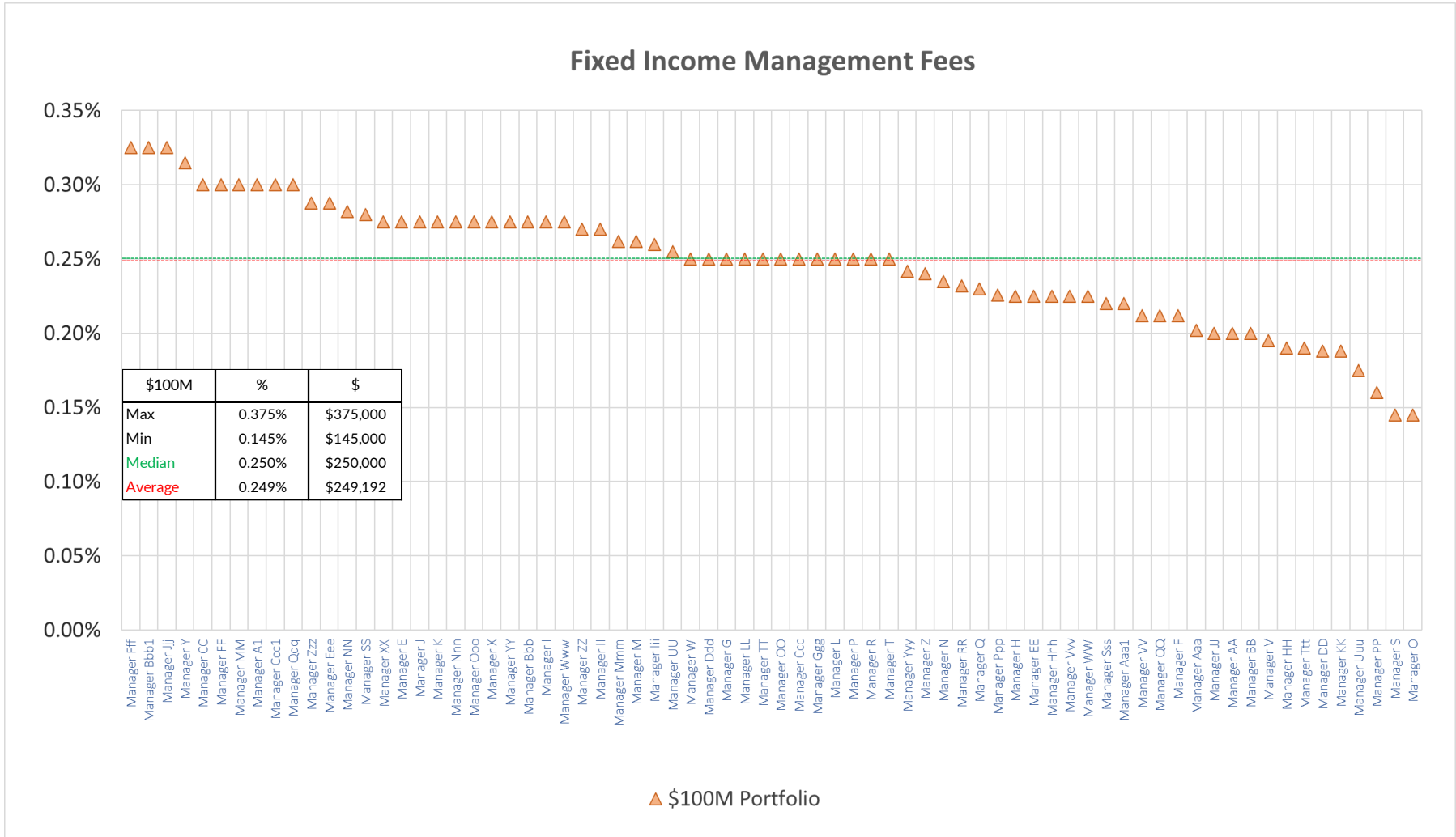


# Standard Fixed Income Management Fees by Firm: \$50M *(basis points)*



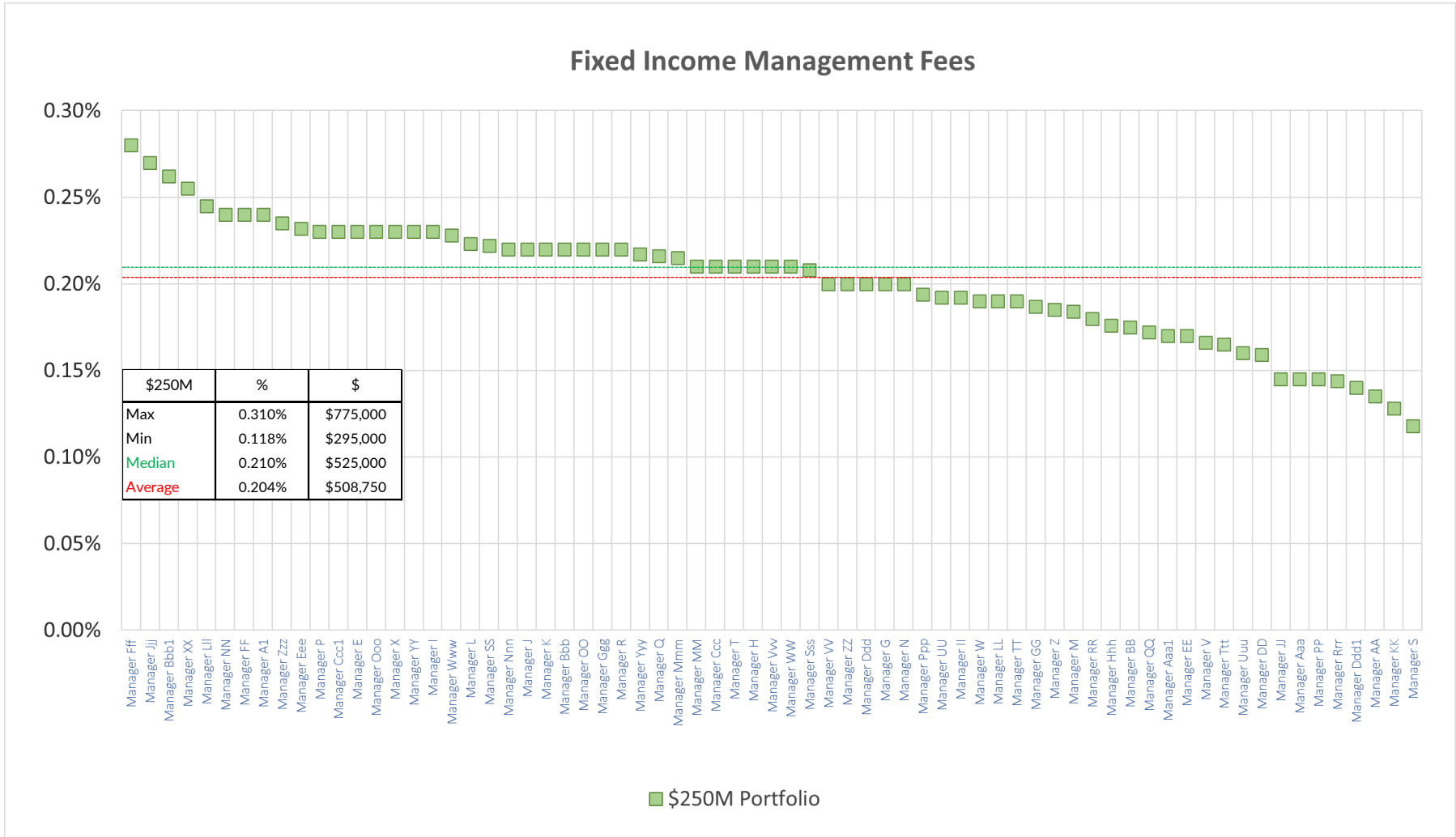


# Standard Fixed Income Management Fees by Firm: \$100M (basis points)



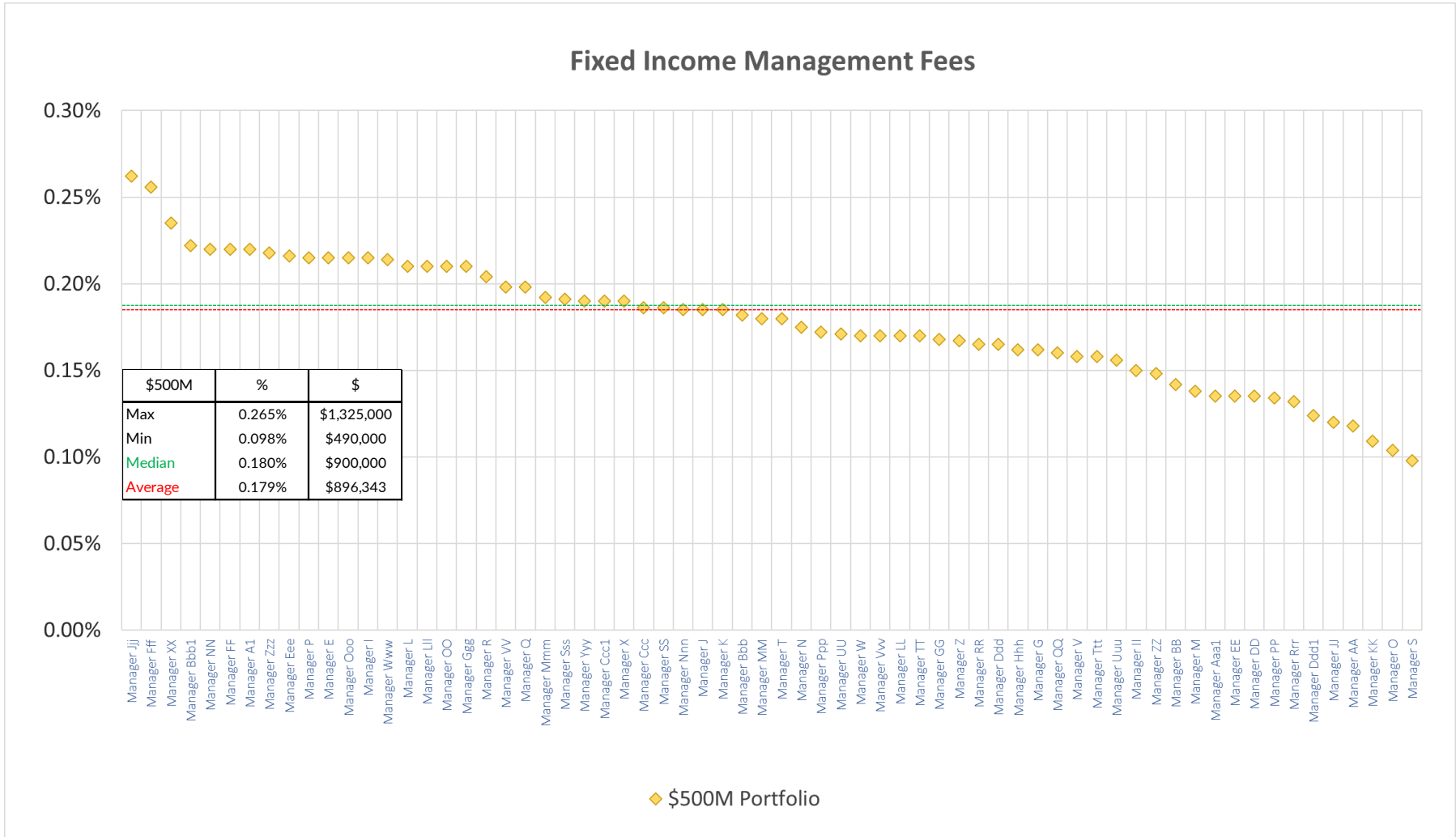


# Standard Fixed Income Management Fees by Firm: \$250M (basis points)



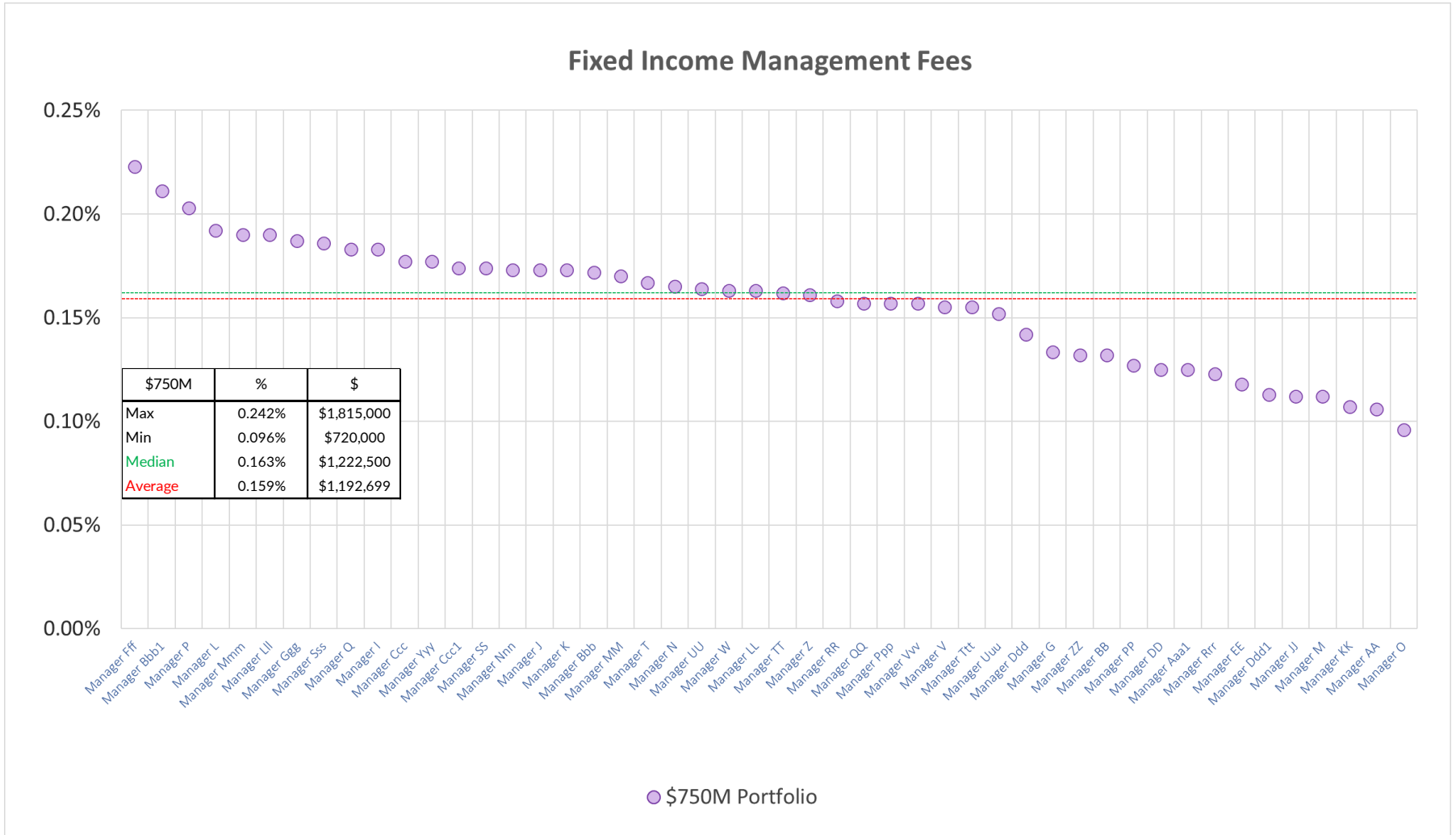


# Standard Fixed Income Management Fees by Firm: \$500M (basis points)





# Standard Fixed Income Management Fees by Firm: \$750M (basis points)





# Standard Fixed Income Management Fees by Firm: \$1B (basis points)

